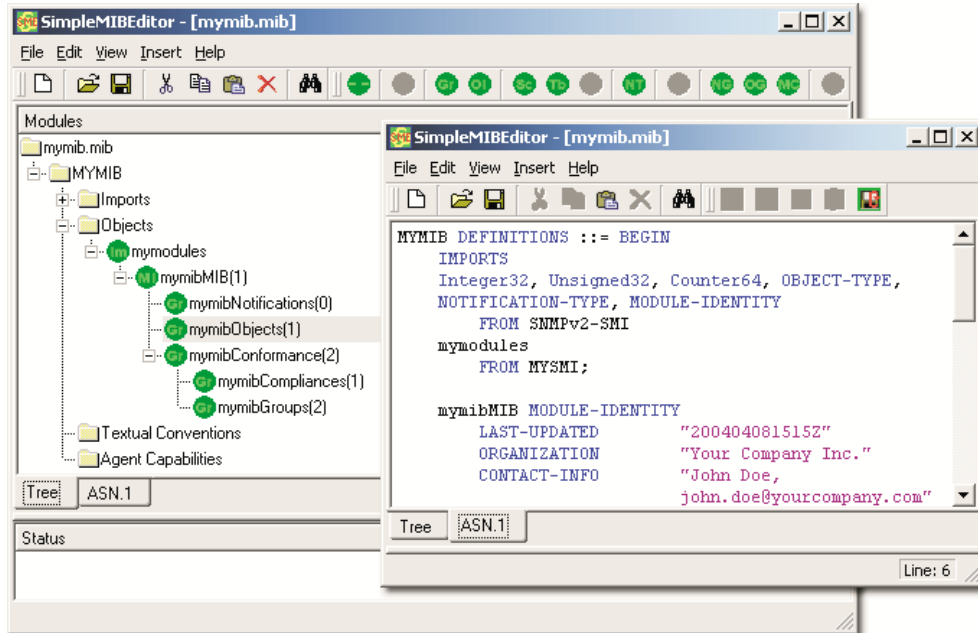


## A Graphical SNMP MIB Creator, Cleaner and Converter



SimpleSoft

Simplifying  
Network  
Management

### Overview

The Simple Network Management Protocol (SNMP) is used extensively in managing today's heterogeneous networks. SNMP managers and agents from different vendors can communicate with each other because they use a common mechanism to exchange data (protocol). They also share a common understanding of the data being exchanged. This common understanding is defined in Management Information Base (MIB) files.

MIBs are written using the Abstract Syntax Notation (ASN.1) specification language and must adhere to the grammar specified in the Structure of Management Information (SMI) specifications. As SNMP has evolved from v1 to v2c to v3, the SMI has also evolved with SNMPv1 using an older SMI specification and SNMPv2c and SNMPv3 using a newer SMI specification.

The complex, arduous task of creating MIB definition files can now be simplified by using the **SimpleMIBEditor**. **SimpleMIBEditor** is an easy to use, graphical tool that simplifies the process of creating SMI conforming MIB definition files, without requiring the user to be knowledgeable about the nitty-gritty details of ASN.1 syntax. It guides the user in creating both SNMPv1 and SNMPv2 SMI documents by gathering information in easy to understand dialog boxes and automatically converting it into syntactically correct ASN.1 notation.

SimpleMIBEditor **creates** new SNMPv1 and SNMPv2 MIBs, automatically **corrects** many common errors in existing MIB definition files, and also **converts** MIBs from one SMI to another.

### Features

**SimpleMIBEditor** is an intuitive graphical editor that automatically creates SMI compliant MIB documents without requiring the user to be an ASN.1 specialist. Using this tool you can simply and quickly:

- Create new SNMPv1 and SNMPv2c SMI MIBs.
- Edit existing MIBs after automatically correcting many common errors.
- Convert MIBs from one SMI to another. Get guidance on enterprise tree organization.
- Get suggestions on MIB module structure in accordance with IETF guidelines.
- Create SMI conforming SNMP table definitions by filling in information in dialog boxes.
- View the MIB as a graphical object registration tree in the Tree view.
- Switch views from Tree View to ASN.1 view and see the associated ASN.1 text.
- Format MIB files using standard white space conventions for fixed width.
- See color-coded sections in the ASN.1 view for easy identification.
- Pre-load other imported MIBs to easily access user-defined data types and textual conventions.
- **SimpleMIBEditorPro** also assists in creating stub access/interface functions for Net-SNMP agent.

### System Requirements

**SimpleMIBEditor** is available on

- Microsoft Windows 2000/XP/2003/7/8/2008.
- RedHat Enterprise Linux (5.x, 6.x).