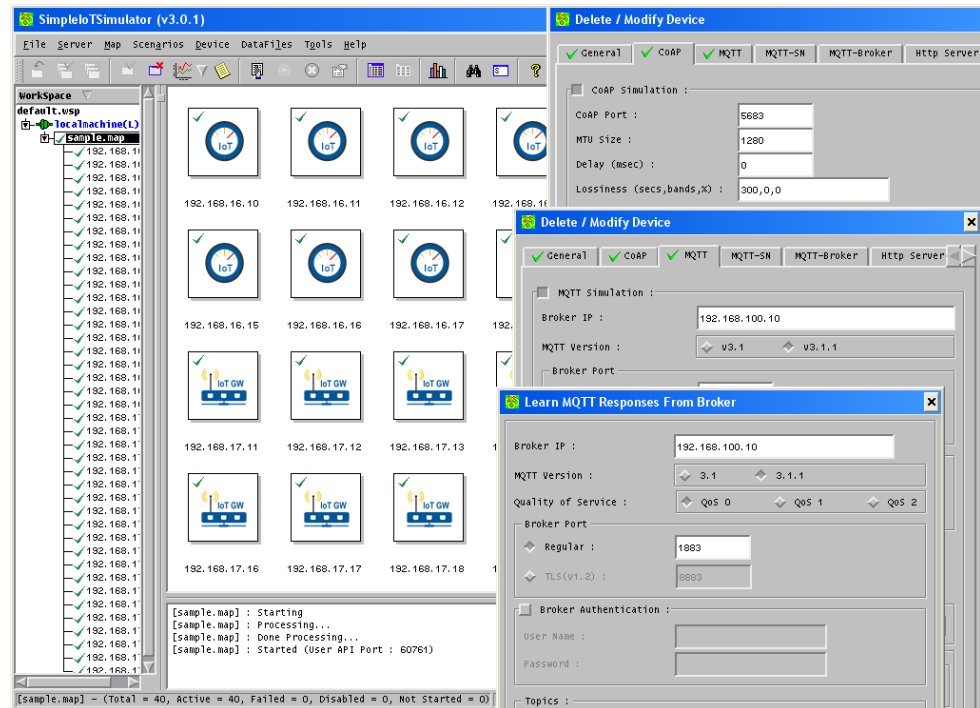




Simplifying
IoT
Management



Overview

SimpleIoT Simulator is an easy to use, IoT device simulator that quickly creates test environments made up of thousands of sensors and gateways, all on just one computer.

SimpleIoT Simulator supports many of the common IoT protocols like **MQTT**, **MQTT-SN**, **CoAP**, **HTTP/s**, **Modbus** and **BACnet** to enable **IoT solution vendors** improve product quality and significantly shorten their time-to-market without incurring large capital expense for creating test infrastructure. The simulator can “learn” from existing devices to duplicate customer environments, or use the learnt data as a template to create thousands of sensors and gateways. It can even create scripted error scenarios on demand. Both IPv4 and IPv6 sensors are supported and the simulator includes built-in support for lossy behavior in constrained environments. Example scripts to work with popular platforms like **Azure IoT**, **IBM Bluemix**, **Amazon AWS** and others are available to facilitate quick setup.

Applications

Development and QA groups can do scalability and functional testing without large infrastructure. Sales groups can create realistic demos that highlight the management application features to shorten sales cycles while Training departments can create portable teaching environments with quick setup. Professional services can create targeted services using duplicated customer environments while Tech Support departments can more easily reproduce customer problems in their test labs. SimpleIoT Simulator can also be used to model sensor/gateway data for creation of different physical environments like **connected cars and smart-cities**.

Operation

Only a few simple steps are required to start using the **SimpleIoT Simulator**. They are:

- Use the built-in **learner** utilities to record packet exchanges from real sensors and gateways.
- Use this learnt data as a template to create test environment with thousands of IoT sensors.
- Run scripts to create error scenarios, generate notifications and dynamically change properties.

Support for changing data is built-in without requiring any user programming as is lossy behavior and delay. To support additional management protocols like SNMP, Telnet/SSH an IoT management module is available within the popular **SimpleAgentPro** and **SimpleAgentEnterprise**.

System Requirements

- 64bit Linux

SimpleSoft Inc.
257 Castro Street
Suite 220
Mountain View
CA 94041
650.965.4515
650.965.4505 fax
sales@simplesoft.com
www.simplesoft.com